



Updates to SLEDS Post-Secondary Secure Reports

Erin Osborn | Research Analyst, SLEDS Network Member (Century College)

Meredith Fergus | SLEDS Coordinator (Office of Higher Education)

AIRUM 2018

New Data Elements

- Enrolled students
 - Additional demographics
 - Credits attempted
 - Employment while enrolled and prior
- Completers
 - Ten years of employment data post-graduation



New Demographic Data (For Enrollees)

- Personal Residence (State)
- Minnesota Residence County
- First Generation*
- Veteran*

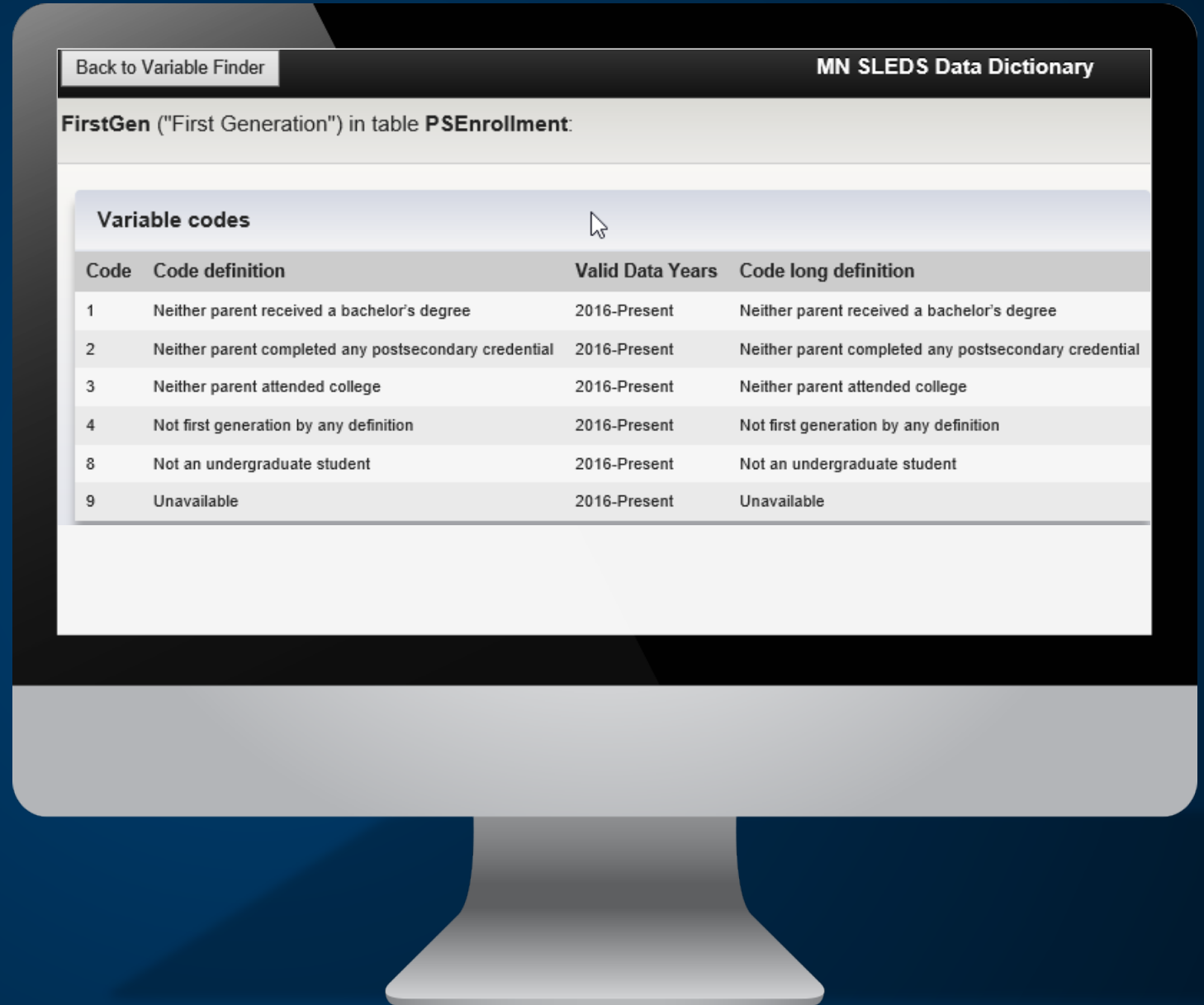
*only available from 2016-present

FirstGen

Code definitions
available in the SLEDS
Data Dictionary!

Within "Research" tab

sleds.mn.gov/dataDictionary/



The screenshot shows a web browser displaying the MN SLEDS Data Dictionary. At the top left is a button labeled "Back to Variable Finder". At the top right is the text "MN SLEDS Data Dictionary". Below this is a heading "FirstGen ("First Generation") in table PSEnrollment:". The main content is a table with the following structure:

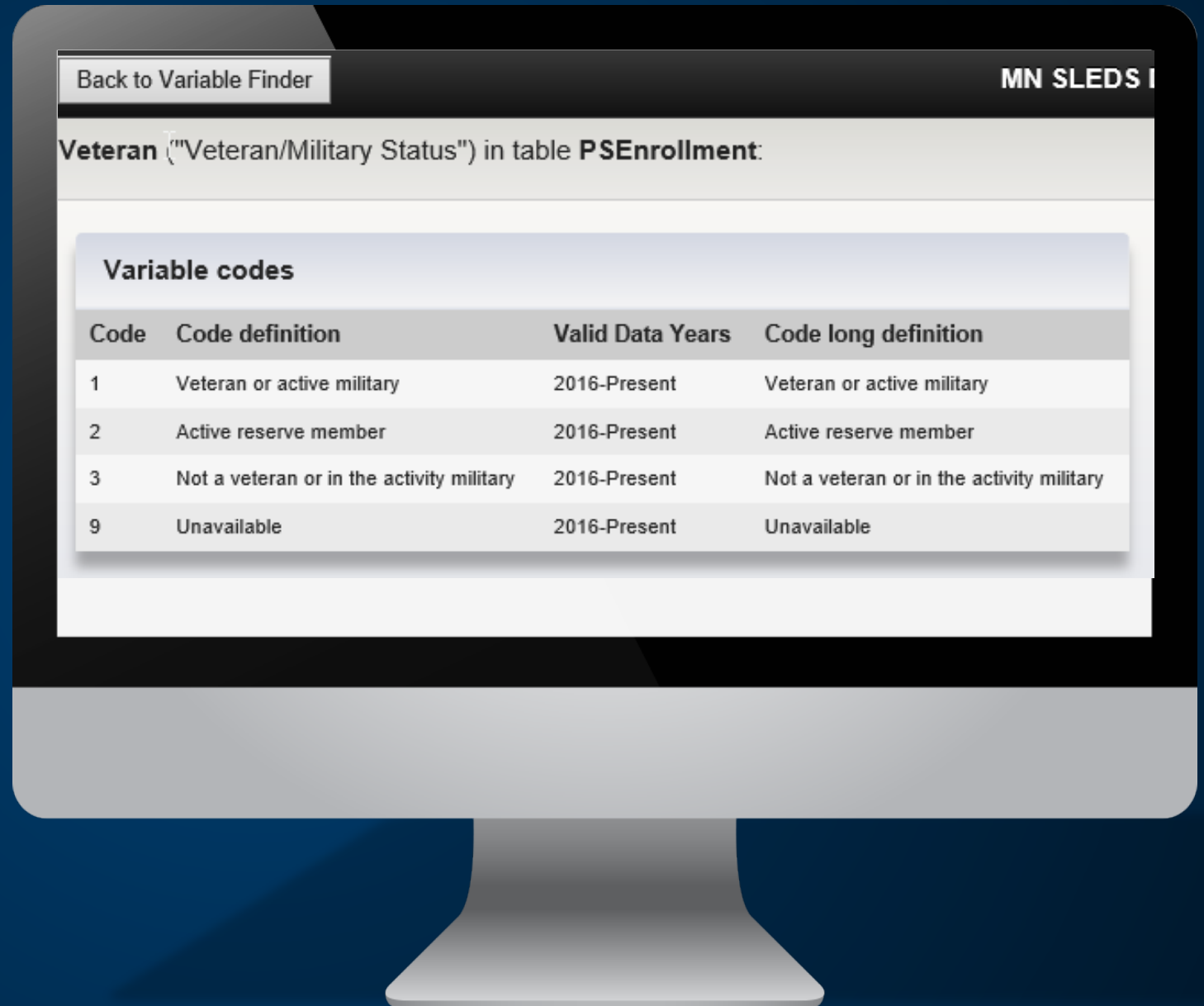
Variable codes			
Code	Code definition	Valid Data Years	Code long definition
1	Neither parent received a bachelor's degree	2016-Present	Neither parent received a bachelor's degree
2	Neither parent completed any postsecondary credential	2016-Present	Neither parent completed any postsecondary credential
3	Neither parent attended college	2016-Present	Neither parent attended college
4	Not first generation by any definition	2016-Present	Not first generation by any definition
8	Not an undergraduate student	2016-Present	Not an undergraduate student
9	Unavailable	2016-Present	Unavailable

Veteran

Code definitions
available in the SLEDS
Data Dictionary!

Within "Research" tab

sleds.mn.gov/dataDictionary/



Other New Fields (For Enrollees)

- OHE: High School Grad Year
- OHE: Secondary School Experience
- Term Start Date/End Date*
- Regular Credits Attempted
- Remedial Credits Attempted
- Transfer Credits Attempted

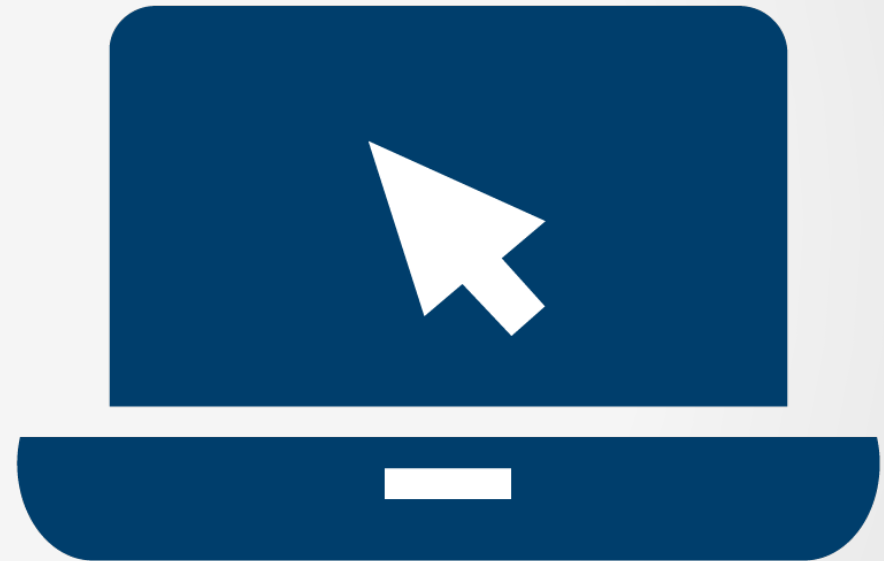
*only available from 2016-present

OHE High School Grad Year, Secondary School Exp

HS grad year as reported by student to their college

Secondary School Experience:
ACT HS Code (includes private schools and a code for home-schooled)

K12 enrollment variables only go back to 2005 – this provides MORE data!



Credits Attempted

- Regular, Remedial, and Transfer credits attempted for the term and fiscal year
- FY2017/FY2018: students will have multiple records (one for each term enrolled in the fiscal year selected)



New Employment Variables (Completers)

- Sum Hours
- Sum Wages
- Multiple Employment Found
- Employer Size
- Employer Region
- Employer Ownership
- Employer Industry
- Employee Tenure

Year 1 - Year 10!

Sum Hours, Sum Wages

For July 1 – June 30 aligning with each fiscal year after the Data Mart fiscal year selected

- Sum of hours worked for all employers
- Sum of wages paid by all employers



Multiple Employment Found

Flag indicating student has multiple unemployment insurance records

- For last two quarters of each fiscal year after the fiscal year selected (therefore, no flags appear when looking at most recent year of data: FY2019)
- Excludes self-employment



Employer Size, Region, Ownership

Size: very small (<10), small (10-49), medium (50-249), or large (250+)

Region: 11 economic development regions

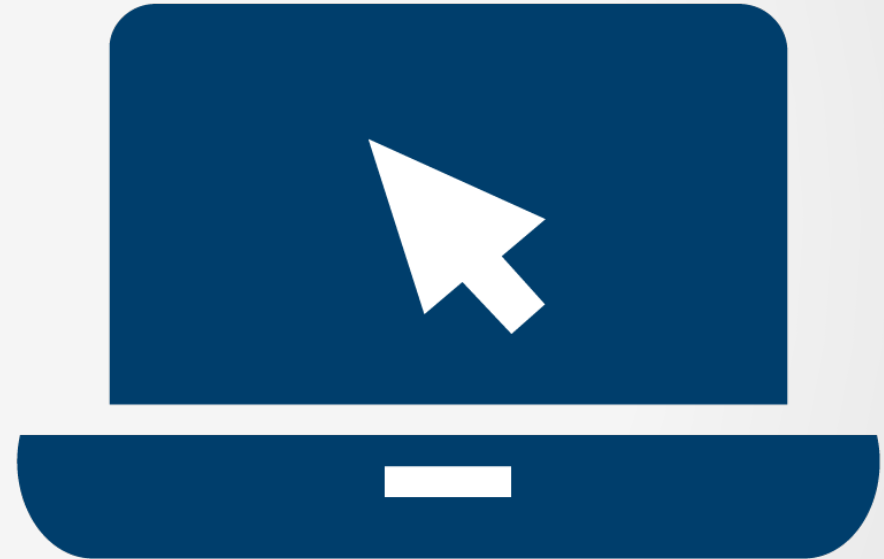
Ownership: government or private

Associated with Employment Org ID showing highest sum wages for the fiscal year



Hybrid classification developed by DEED

- 4 digit NAICS code for professional/technical services
- 3 digit NAICS code for all other industries



Employee Tenure

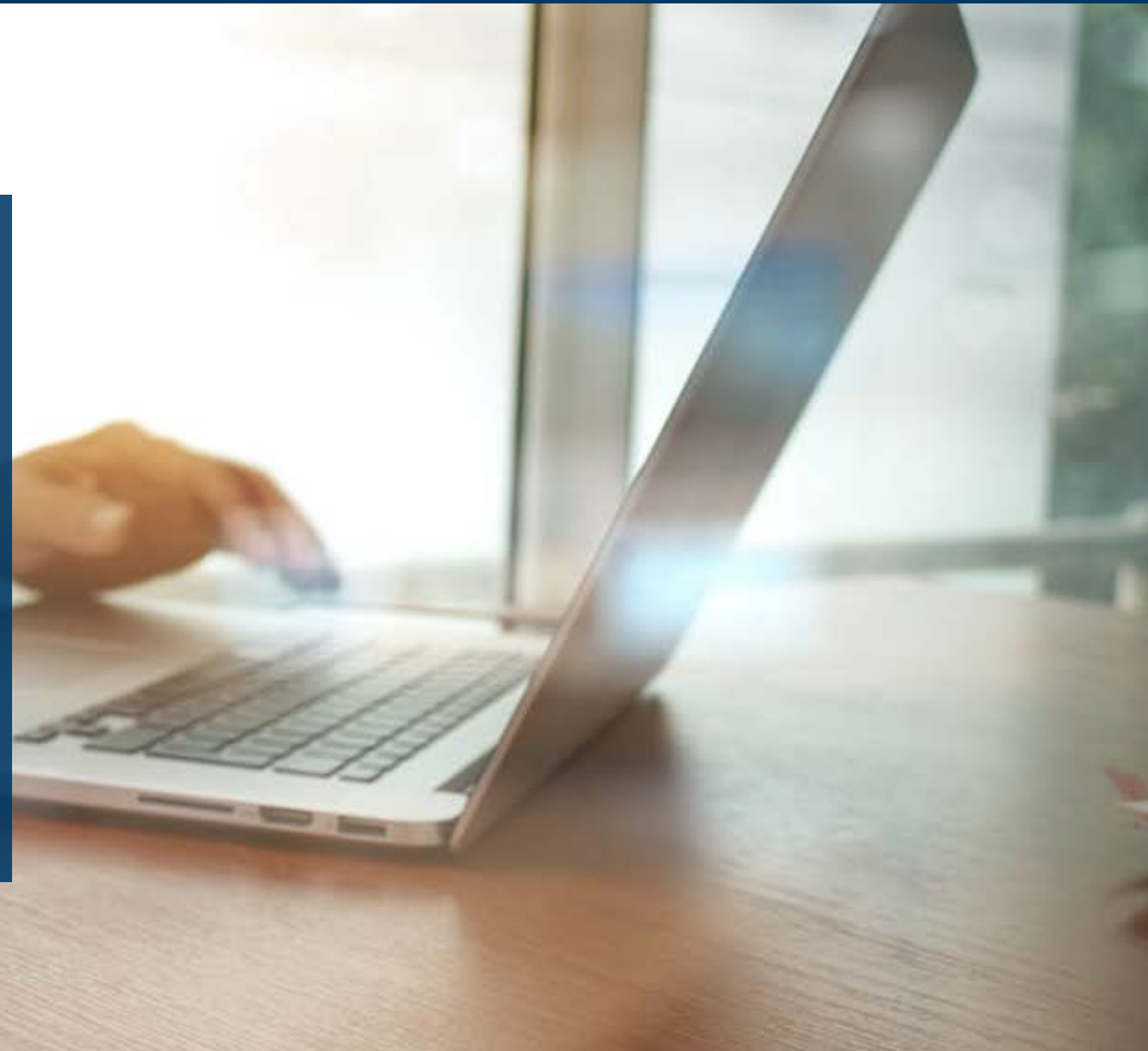
- Tenure as of the last quarter associated with Employment Org ID showing highest sum wages for the fiscal year
- Provided in quarters (i.e., tenure of 4 = 1 year)



New Employment Variables (Enrollees)

For fiscal year selected, prior fiscal year, and two fiscal years prior:

- Sum Hours
- Sum Wages
- Industry of Employment
- Multiple Employment Found



Questions? Comments?

Thank you!